

Oshkosh 2007 Columbia Owner's Briefing



Bill Schillhammer
(781)402-7526
July 26, 2007



Avidyne Product Strategy

- Differentiate our products by being better and easier to use.
- Expand reach of current product offerings.
- Continuously enhance our existing products.
- Increase number of products available for Aftermarket & OEM.



Oshkosh 2007 Announcements

- Avidyne announces Release 7.0 Upgrade for *Entegra*
 - *Portrait supported this time!*
- Avidyne and Aerosim announce Entegra/Envision Free-play Simulator for Computer-based training
- Avidyne announces MLB700 Broadcast Datalink Receiver
- Avidyne announces TWX670 Tactical Lightning Sensor



Release 7.0 for Entegra

- Significant upgrade adds WAAS capability to *Entegra* Integrated Flight Deck
 - Latest factory software levels and field-upgradeable hardware modifications for EXP5000 PFD
 - Latest factory software levels for EX5000 MFD
 - Portrait EXP5000 & EX5000 supported this time



Annunciated LPV Approaches



Complete update to EXP5000

- Updated hardware
 - IRU, ADU, MPU, ACR, code
- Lots of new features
 - Additional display items
 - Additional AP annunciations inc. no comm
 - VS & TAS display limits increase to 999
 - Horizon heading reference marks
 - Roll/Pitch extra marks, TO low speed not red
 - AHRS warm start
 - ADF bearing source
 - Level C > B for ADAHRS & ACR flight code
 - ...

SW only update to EX5000

- Mostly minor improvements
- #1 EX5000 service problem
 - Memory corruption fixed

Release 7.0 Pricing

- \$2,395 (plus installation)
 - Under new-product warranty
 - Or on FLEX Service Plan
 - Or have Release 6
(All customers who previously upgraded to Release 6 are eligible for in-warranty pricing.)
- \$3,895 (plus installation)
 - Out of warranty
 - Does not have Release 6
- Scheduling now
 - Call Sales (800)284-3963



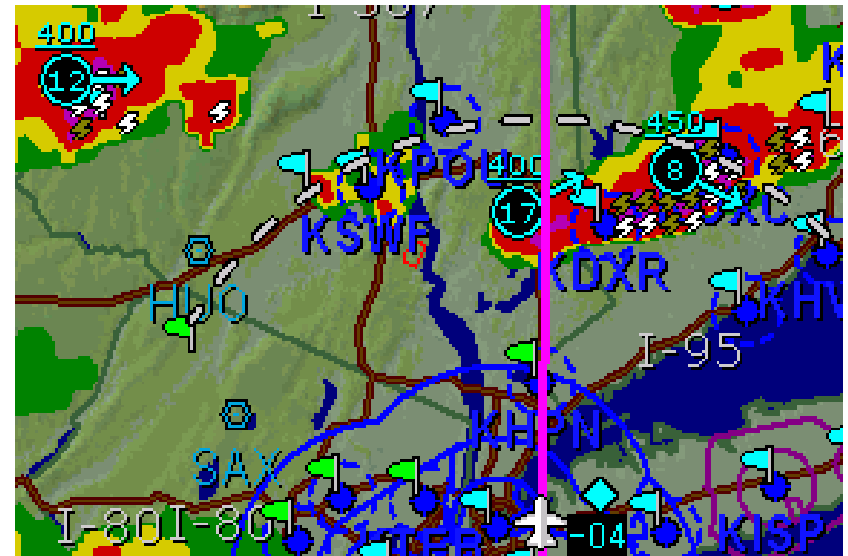
Aerosim/Entegra CBT

- Partnership with Aerosim to develop “whole product” training solution
- Free Play Simulator
- Landscape only



Introducing the MLB700

Broadcast Datalink Receiver for WSI InFlight[®] Weather & SIRIUS[®] digital audio entertainment



MLB700 Overview

- Avidyne dual-channel receiver capable of receiving data & audio via the SIRIUS® Satellite Broadcast Network.
 - WSI InFlight® Aviation Weather Service
 - SIRIUS® Satellite Radio provides Music/Entertainment Service
- Avidyne is marketing this product as the MLB700 receiver for Avidyne displays
 - Data-only version
 - Data & Audio version
- WSI will private-label this product for 3rd party displays and as replacements for their AV100 & AV200 series
 - AV-300 – Data only
 - AV-350 – Data & Audio



**Avidyne MLB700
w/RC70 Remote**

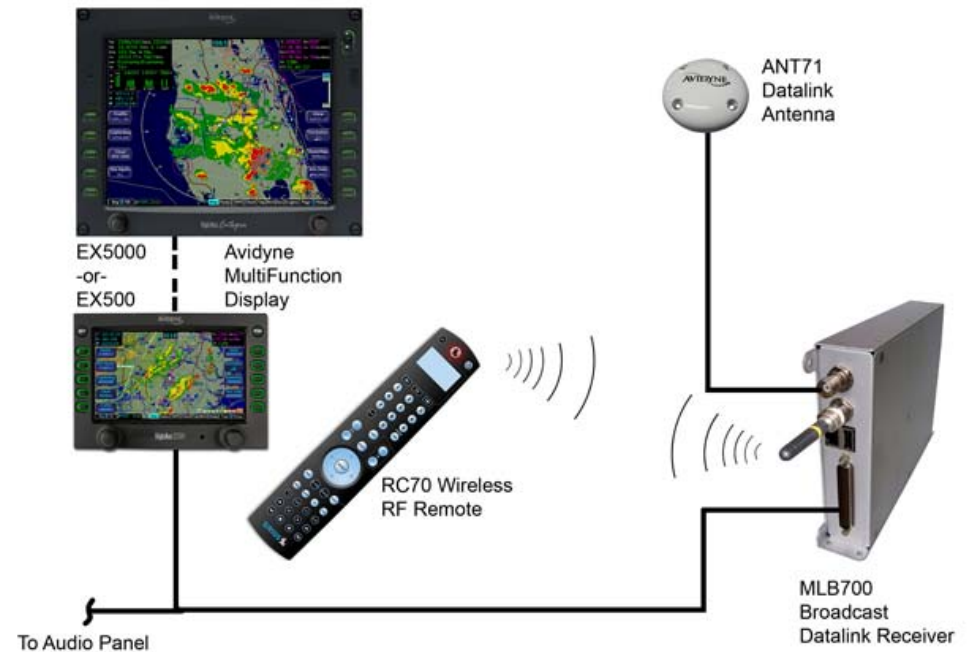


WSI AV-300



MLB700 Product Features

- Supports up to two MFDs simultaneously
- RC70 - RF Remote Control
 - Provides control of Music/Entertainment from any seat in the aircraft
 - Built-in display for feedback
 - Support for dual remotes



MLB700 Product Features - Weather by WSI

- Known as *the leader* in Aviation Weather
- WSI InFlight[®] weather products recognized throughout the industry for the quality information that they provide
- Supported by knowledgeable professionals who understand pilot's needs
 - Full staff of meteorologists and pilots
- Award-winning NOWrad[®] mosaic of the U.S. Doppler Weather Radar network
 - Continuously quality-controlled by degreed meteorologists.
- Combination of advanced algorithms and up-to-the minute surface observations to determine the type of precipitation, rain, mixed or solid.
- Most accurate depiction of precipitation over the United States available anywhere.

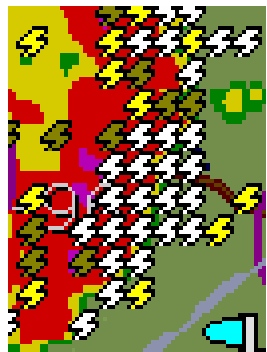
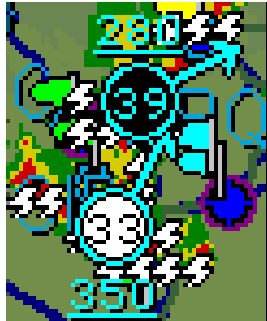


WSI Data Center
N. Andover, MA.

“The Weather You Need...From the Source You Can Trust”



MLB700 Subscription Services



- **Basic service includes datalinked Lightning.**

Avidyne's CONUS Weather Data Subscription Services (using WSI InFlight® Data)

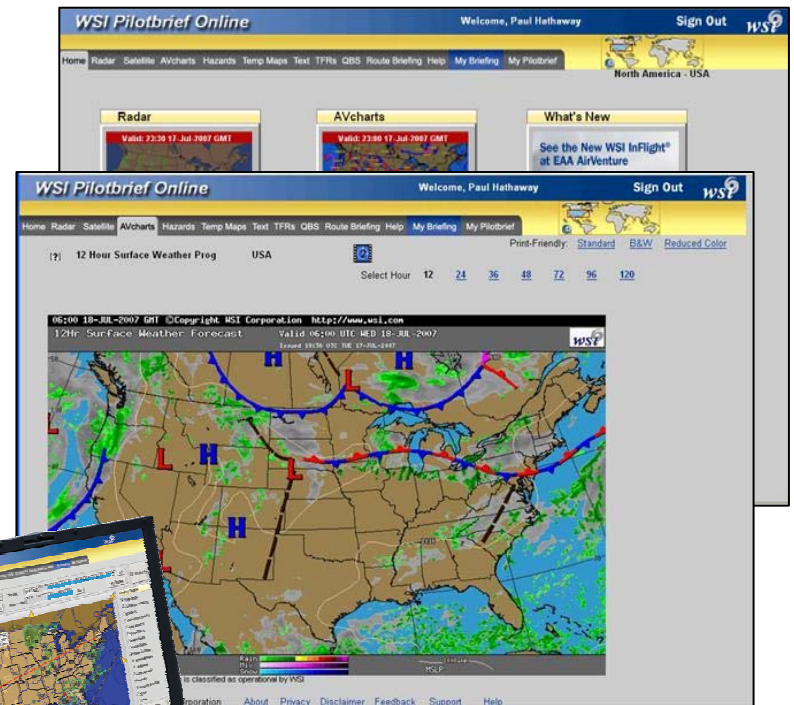
	Avidyne Performance \$39.99	Avidyne Essentials \$29.99
NOWrad®	✓	✓
Graphical METARs	✓	✓
Textual METARs	✓	✓
TAFs	✓	✓
TFRs	✓	✓
Lightning	✓	✓
Storm Tracker (Cell Movement)	✓	
Echo Tops (Cell Height)	✓	
Winds Aloft	✓	
Temps Aloft	✓	
Graphical AIRMETs	✓	
Graphical SIGMETs	✓	

SIRIUS® Audio subscriptions are available for \$12.95/month through SIRIUS® Satellite Radio.



WSI Pilotbrief Online™

- Introductory Offer - 12 Months of PBO Pro service FREE w/purchase of MLB700 in 2007
- *The Standard* for professional online weather briefings.
- Professional weather briefing from any Internet browser
- Evaluate aviation weather and NOTAMs in one interactive workspace
- Access your online account from any WSI Pilotbrief Pro system right at the FBO
- File flight plans through WSI Pilotbrief Online
- FAA Qualified Internet Communications Provider Certified
- \$59 & \$79 per month plans available.



WSI Pilotbrief Online

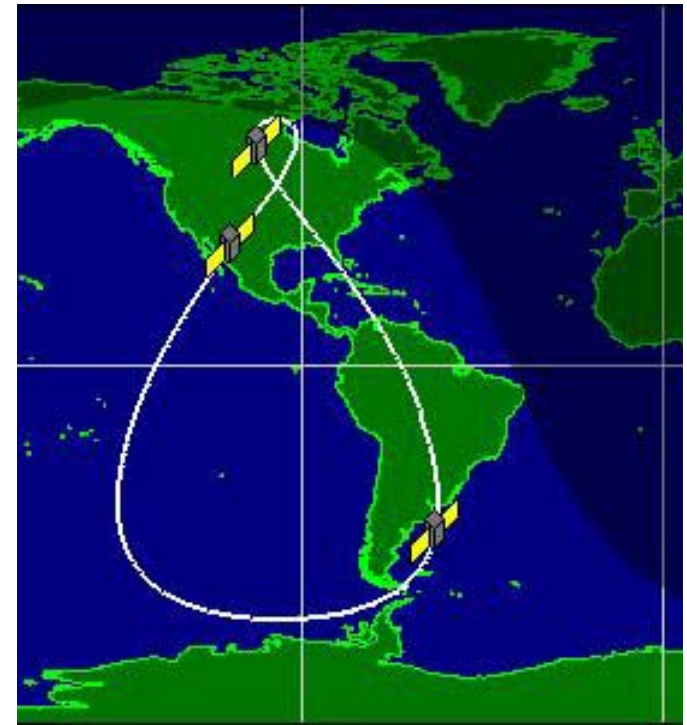


*Offer good only for private aircraft owners.
One free subscription per customer.
Not valid for fleet operators, airlines, etc.



SIRIUS Overview

- SIRIUS uses three *geosynchronous* satellites:
 - Radiosat 1
 - Radiosat 2
 - Radiosat 3
- Two Satellites always over US airspace
- One Satellite always at $>60^\circ$ elevation
 - Provides greater signal availability
- Primary uplink located in Vernon, New Jersey.
- Satellites fly in highly-elliptical orbit in a 24-hour orbital period.



Radiosat Constellation

- Note: Sirius' satellites are named "Radiosat" because there is already a fleet of telecommunications satellites named "Sirius" launched by Sweden's Nordic Satellite AB, and known today as SES SIRIUS.

Problems with Previous-Generation Satellite Systems

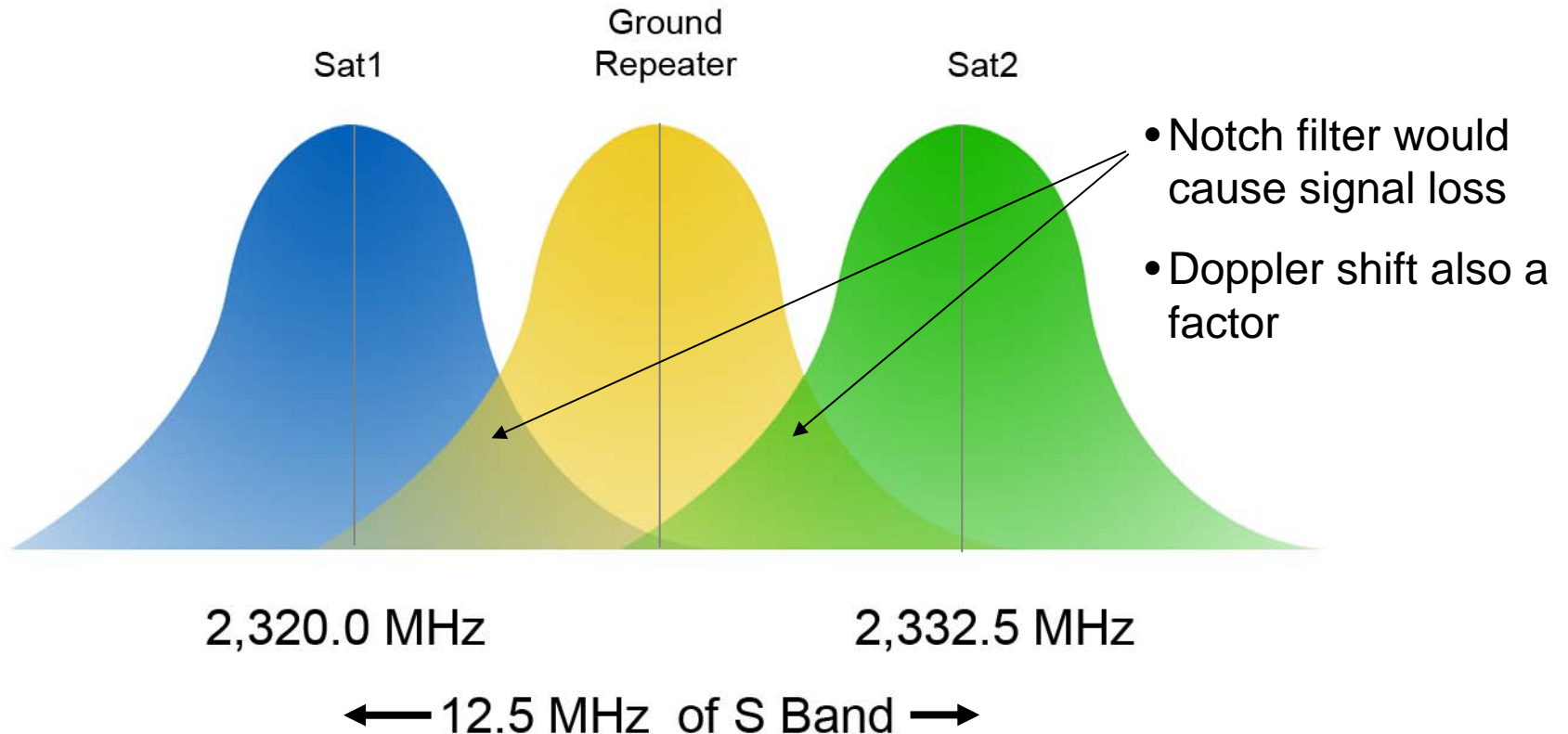
- PS Engineering PMA8000SR Brochure and website:

“NOTE: When flying near around highly populated cities, signal drop-out may occur due to ground-based repeater interference.”

- Uses GEN2 Chipset which is more susceptible to Doppler effect.
- Uses cardioid-patterned antenna which allows reception of stronger ground-based repeater channels, especially at lower altitudes.

Sirius Frequency Spectrum

- Sirius broadcasts using 12.5 MHz of the S Band (2.3GHz Range)

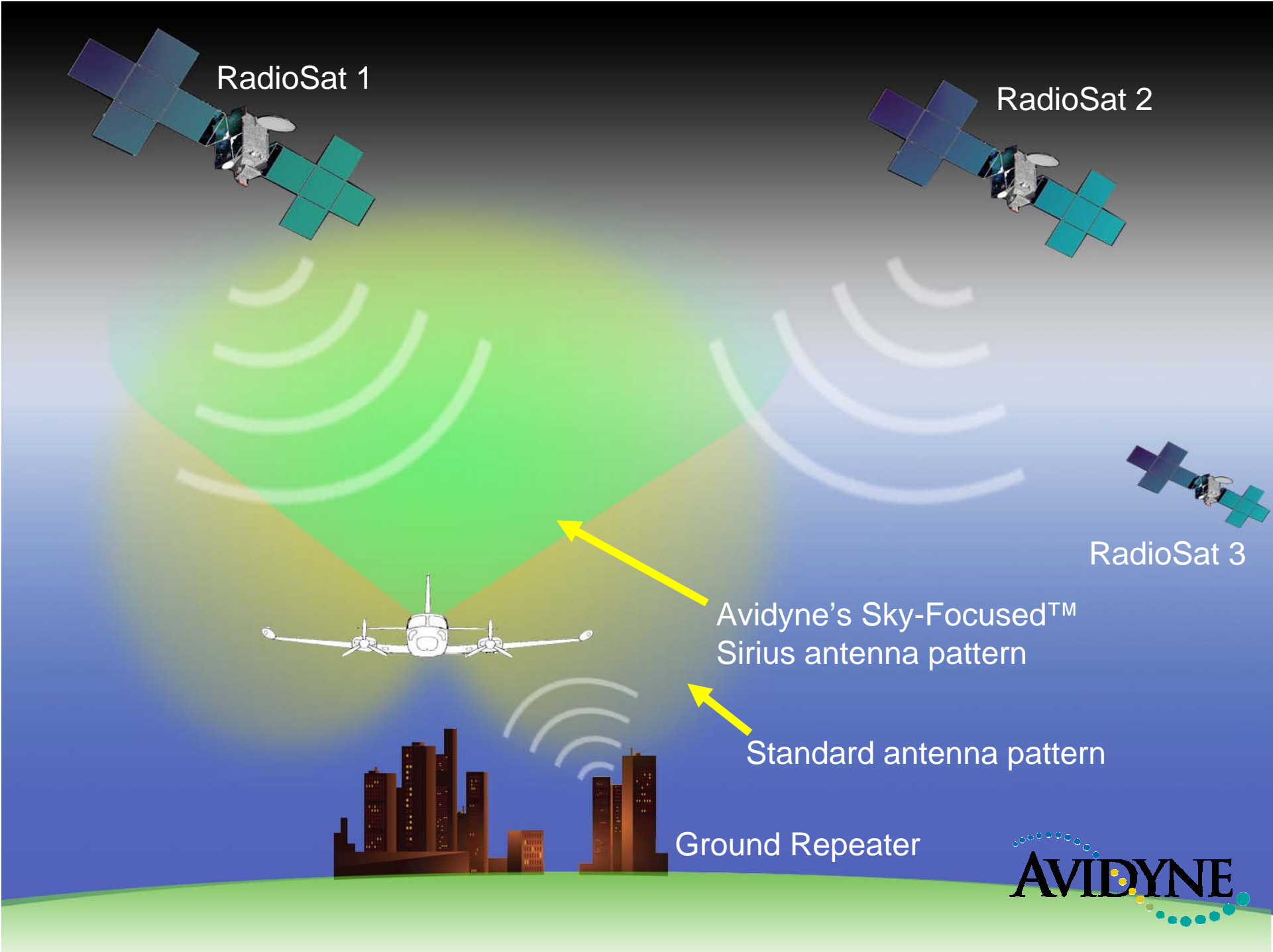


- The Sirius signal is separated into three carriers, one each for the two satellites, and the third for the terrestrial repeater network where available.

MLB700 - Designed for Flight

- Designed specifically for airborne application
- Eliminates problems associated with flight over ground-based repeaters
 - GEN3 Chipset
 - Improved Signal Reception/Availability
 - Improved Doppler Immunity
 - Teardrop-patterned Sky-focused™ antenna rejects ground-based signals, even at low altitudes and bank angles of up to 30° .





MLB700 Pricing & Availability

- \$5,495 for the data & audio version
- \$4,745 for the data-only version
- Save additional \$500 on MLB700 when purchased with EX500 or EX5000 or as part MHAS6000 package.
- Weather Data Subscriptions
 - \$39.99/mo. – Avidyne Performance
 - \$29.99/mo. – Avidyne Essentials
- MHAS6000 safety enhancement bundle pricing including the EX500 with radar interface and a TAS600 traffic system, and data and audio MLB700 begins at \$15,990.
- \$1,500 to upgrade data-only for audio at future date
- Q3 – (Initial shipments in mid-August)



MLB700 System

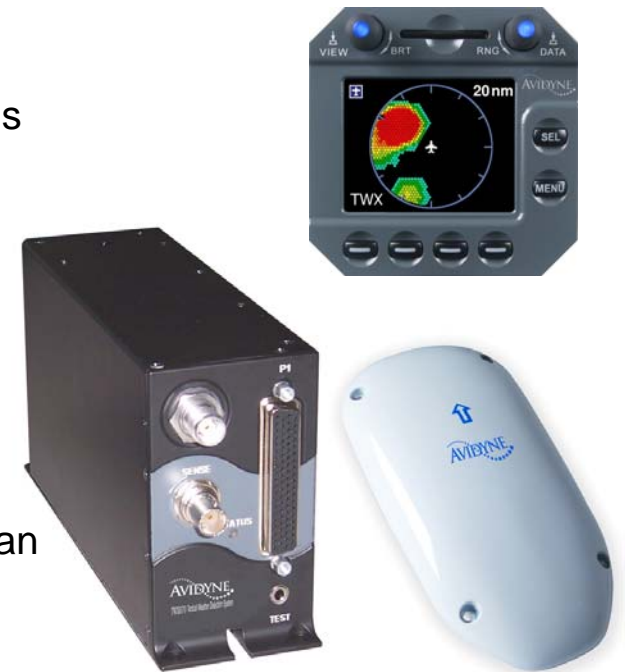
Introducing the TWX670

Tactical Weather Detection System



TWX670 Overview

- Second-generation lightning-based weather detection system
 - Developed by Avidyne's Safety Systems Group - Columbus
 - Formerly Ryan International
 - Makers of original Stormscope®
- Provides intuitive color-contoured display with instantaneous picture of surrounding weather
 - Lightning is the first physical property of a storm cell that can be detected
 - Unlike precipitation, lightning is best determinant of dangerous thunderstorm activity



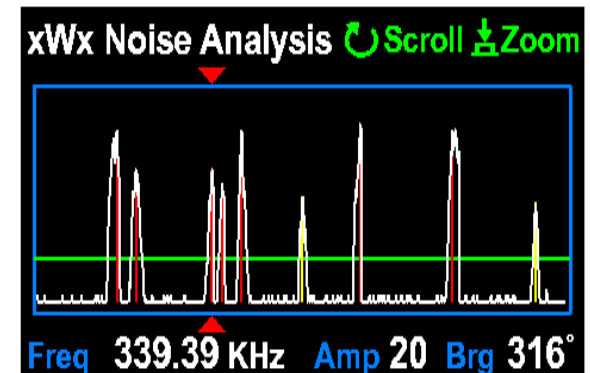
TWX670 Overview

- Already approved to TSO C110a
- Color, lightning-based, real time, tactical, weather avoidance solution
- Significantly-improved accuracy over previous-generation lightning detection systems
- Advanced signal processing, calibration, and noise immunity
 - Minimizes radial spread
 - Allows for the display of close-range strikes from 0nm-25nm
 - Provides true Tactical Weather Detection
- Geo-stabilized data provides greater accuracy when maneuvering.
- Perfect complement to the strategic benefits of satellite-based datalink weather



Easy to Install

- TWX670 makes installation much easier than with legacy systems.
- TWX670 provides spectrum analyzer-like display for skin mapping & noise analysis
 - Advanced noise detection algorithms provide frequency, amplitude and direction of onboard noise.
 - Identifies the peak frequency of each noise band that exceeds an acceptable level,
 - Helps identify the source of the noise
 - Makes it much easier to resolve issues associated with proposed antenna locations
 - Requires no external test equipment



Questions?

